

# Hawaiian Strum #1

## Intro to Hawaiian Ukulele

1 & 2 & 3 & 4 &

Strum

*mf*

T X X X X X X X  
A X X X X X X X  
B X X X X X X X

( $\text{♪} = \overset{\frown}{\text{♪}} \overset{\smile}{\text{♪}}$ )

2

T X X X X X X X  
A X X X X X X X  
B X X X X X X X

3

T 0 0 0 0 0 0 0  
A 0 0 0 0 0 0 0  
B 0 0 0 0 0 0 0

Chuck Chuck

4

T X 0 0 0 X 0 0 0  
A X 0 0 0 X 0 0 0  
B X 0 0 0 X 0 0 0

# Hawaiian Turn-Arounds

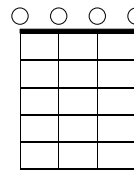
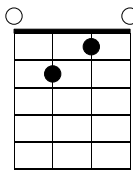
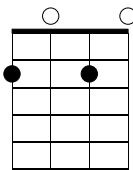
## Intro to Hawaiian Ukulele

**A** Key of C

D7

G9

C6



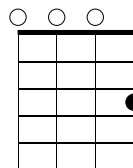
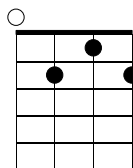
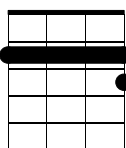
Low-G

**B**

D7

G7

C

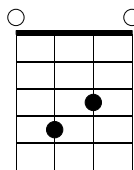
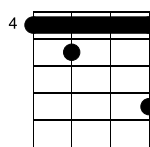
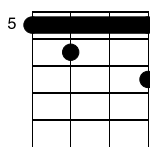


**C**

D9

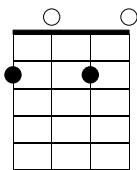
G13<sup>b</sup>9

C6

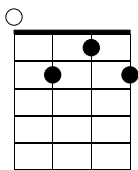


**D**

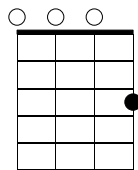
D7



G7



C

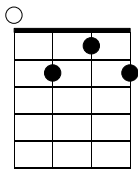


7 0 2 0 2 1 2 8 0 0 3

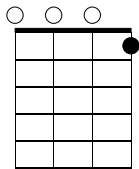
T A B

**D** Key of F

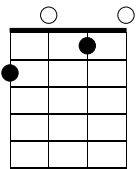
G7



C7



F

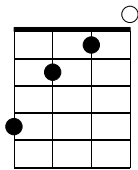


9 2 2 2 1 1 1 10 0 0 0 0 0 0 0

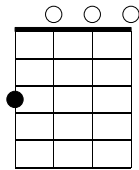
T A B

**E**

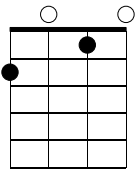
G9



C13



F



11 0 0 0 0 0 0 12 0 0 0 0 0 0 0

T A B

**G**

13

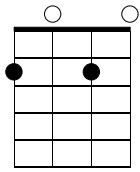
0 1 0 0 14 0 1 0

T A B

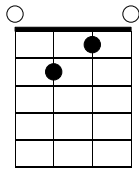
# Hawaiian Turnarounds Key of C (Simple)

## Intro to Hawaiian Ukulele

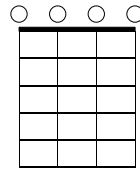
(♩ =  $\overset{\frown}{\overset{3}{\text{J}}}$ )  
D7



G9



C6



1

T 0 0 0 0 0 0 0 2 0 0 0 0 0 0 0

A 2 2 2 7 1 1 1 0 0 0 0 0 0 0 0

B 2 0 0 2 2 2 0 0 0 0 0 0 0 0 0

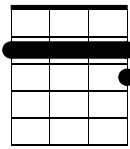
2

T 0 0 0 0 0 0 0 0 0 0 0 0 0 0 0

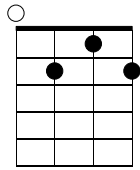
A 0 0 0 7 0 0 0 0 0 0 0 0 0 0 0

B 0 0 0 0 0 0 0 0 0 0 0 0 0 0 0

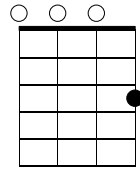
D7



G7



C



3

T 3 3 3 2 2 2 2 2 2 4 3 3 3 3 3 3

A 2 2 2 7 1 1 1 0 0 0 0 0 0 0 0

B 2 2 2 0 2 2 2 0 0 0 0 0 0 0 0

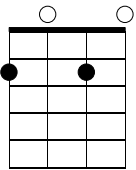
4

T 0 0 0 0 0 0 0 0 0 0 0 0 0 0 0

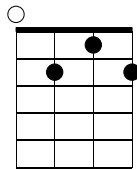
A 0 0 0 7 0 0 0 0 0 0 0 0 0 0 0

B 0 0 0 0 0 0 0 0 0 0 0 0 0 0 0

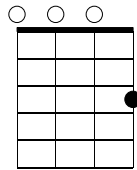
D7



G7



C



5

T 0 2 0 0 2 1 2 6 0 0 3

A 2 0 0 2 0 2 0 0 0 0 0

B 2 0 0 2 0 2 0 0 0 0 0

6

T 0 0 0 0 0 0 0 0 0 0 0

A 0 0 0 0 0 0 0 0 0 0 0

B 0 0 0 0 0 0 0 0 0 0 0

# Puamana

Intro to Hawaiian Ukulele  
Irmgard Farden Aluli

arr. K. Carroll

*(Musical notation with treble clef, 4/4 time signature, and a triplet symbol: (♩ = ♩♩♩))*

**Melody**

**Chords**

1 2 3 4

D7 G7 C D7 G7 C

5 6 7 8

*mf*  
Pu- a- ma- na ku- 'u ho- me i La- ha- na

C C7 F C

9 10 11 12

Me nā pu- a a- la on- a on- a Ku'uhō- me i a- lo- ha 'ia

G7 G7 D7 G7 C

8x