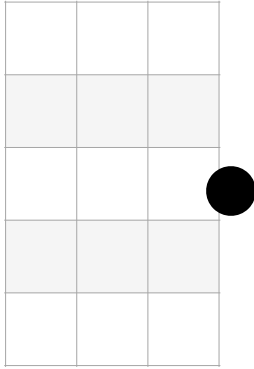


Movable Shapes

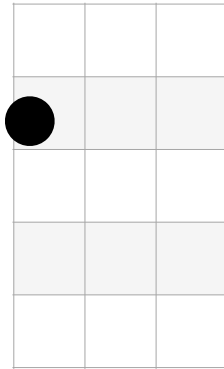
4 string chords

Exercise 1: Play this chord progression with some of the song samples below.

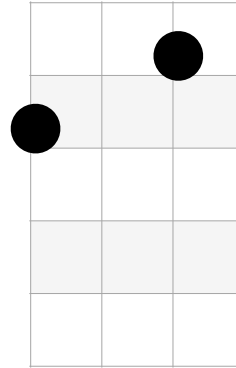
C



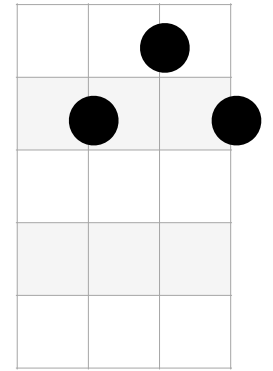
Am



F



G7



I vi IV V7 Songs

Beyond the Sea (Jack Lawrence)

Blue Moon (The Marcels)

Crocodile Rock (Elton John)

Earth Angel (The Penguins)

Every Breath You Take (The Police)

I'll Make Love to You (Boyz 2 Men)

Happiness is a Warm Gun (The Beatles)

Flightless Bird (Iron & Wine)

I Will Always Love You (Whitney Houston/Dolly Pardon)

Lollipop (Ronald & Ruby)

Monster Mash (Bobby Pickett)

Octopus' Garden (The Beatles)

Stand By Me (Ben E. King)

This Magic Moment (The Drifters)

Total Eclipse of the Heart (Bonnie Tyler)

Unchained Melody (Righteous Brothers)

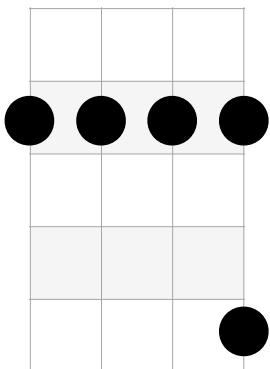
Why Do Fools Fall in Love (Frankie Leymon & the Teenagers)

Who Put the Bomb... (Marry Mann)

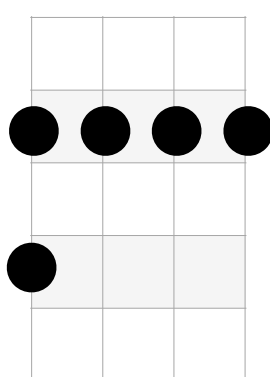
You Don't Own Me *Lesley Gore)

Exercise 2: Play this chord progression also with some of the song samples above. Notice how the pitch has risen slightly.

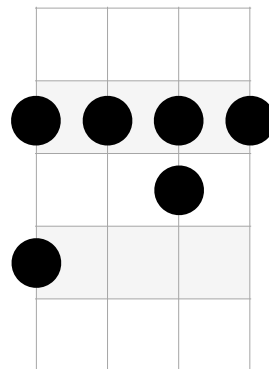
D



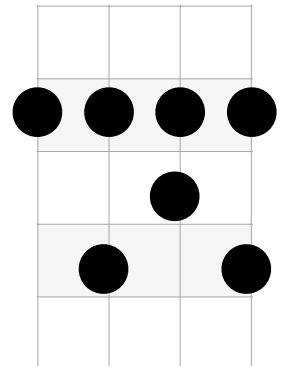
Bm



G



A7

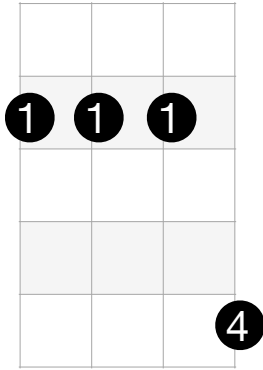


Exercise 3: Choose a song above and try playing this chord pattern in every key! (Just move the shapes up the neck one fret at a time.)

6 Major shapes

4 string chords

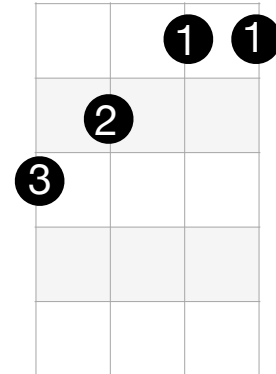
1 D shape



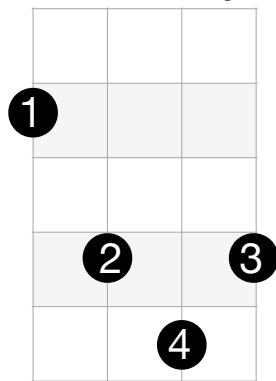
Exercise 4: Play each shape

Here are the 6 Major Chord shapes which cover all 4 strings. You've probably seen some of these in chord books and/or song sheets (and maybe thought, "YIKES!" Don't worry, we'll break them down into 3 string shapes soon. For now it's important to learn the full shape for future reference & understanding.

2 Bb Shape



3 Funky Monkey

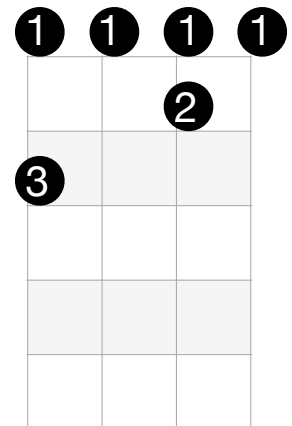


After reviewing these shapes and trying them out (some may take some time and strengthening!) we are going to connect them so that we are playing the same chord all the way up the neck.

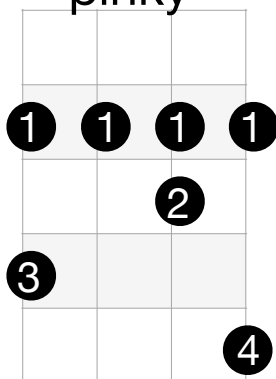
Once you see how they are connected, you can begin to memorize those connections and eventually find any major chord you need all the way up the neck.

Note: "Funky Monkey" and "F Shape w/ pinky" are not commonly used, but it's good to know about them anyway.

4 F shape

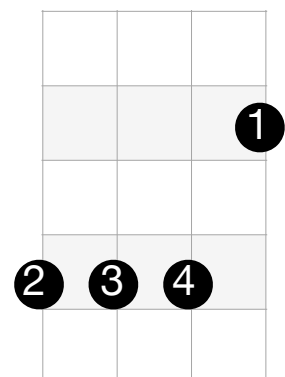


5 F shape w/ pinky



A note about strength
The muscles in your forearms control your fingers. These muscles are small and they get stronger with simple repetitions. If you can't play all these shapes now, dedicate some time each day for the rest of this course and you'll be surprised at just how strong

6 E Shape



Monkey Chords

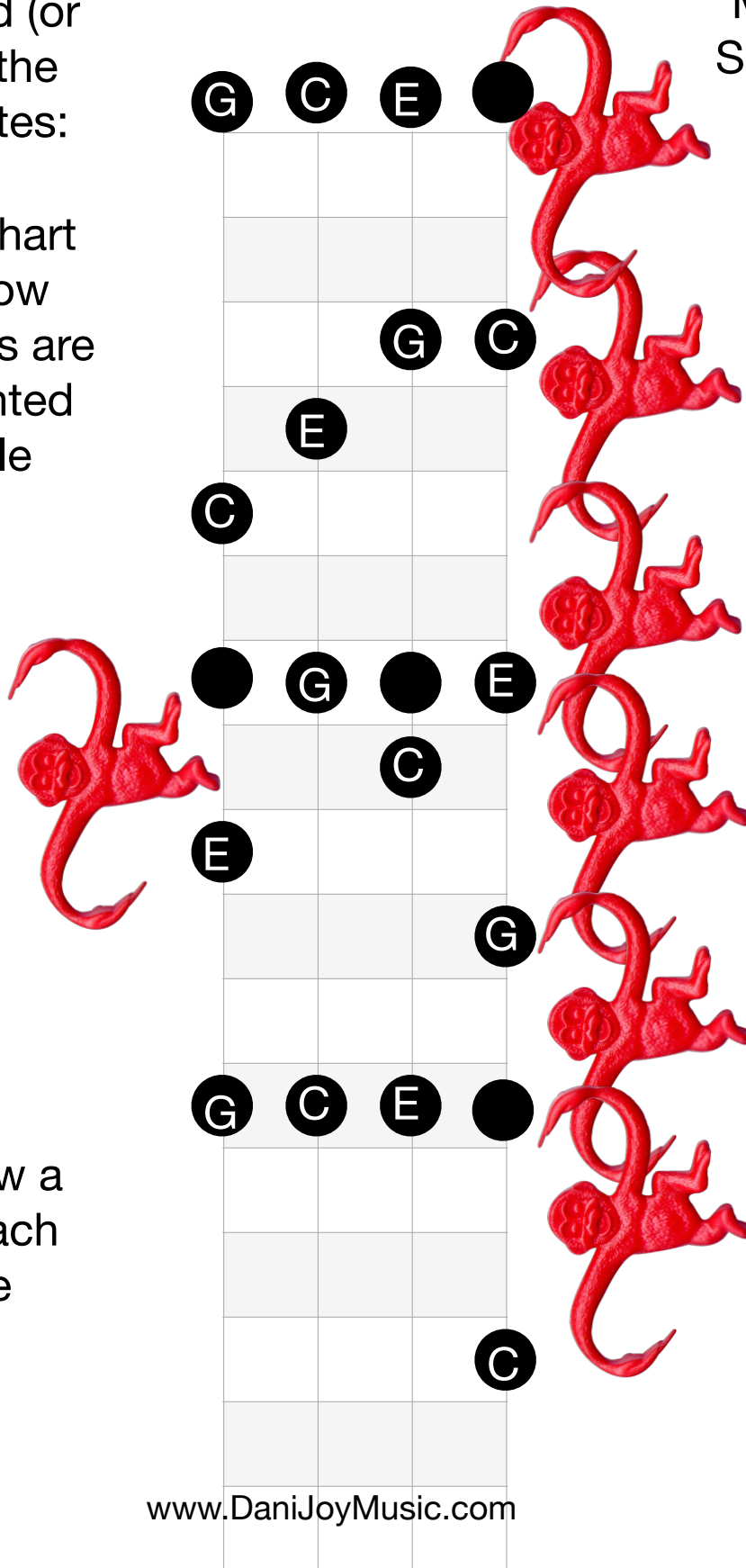
All C Major

A C Major Triad (or C chord) has the following 3 notes:

C E G

Notice in the chart to the right how only these notes are being represented on the ukulele fretboard.

Can you see the 5 Major Chord Shapes within this chart?



Exercise 5: Draw a circle around each of the moveable shapes.

Monkey Chords

All G Major

Can you see the 5
Major Chord
Shapes within
this chart?

A G Major Triad (or
G chord) has the
following 3 notes:

G B D

Notice in the chart
to the right how
only these notes are
being represented
on the ukulele
fretboard.

Exercise 6: Draw a
circle around each
of the moveable
shapes.

